

YA-PS07

User Manual

Patient Transfer Stretcher

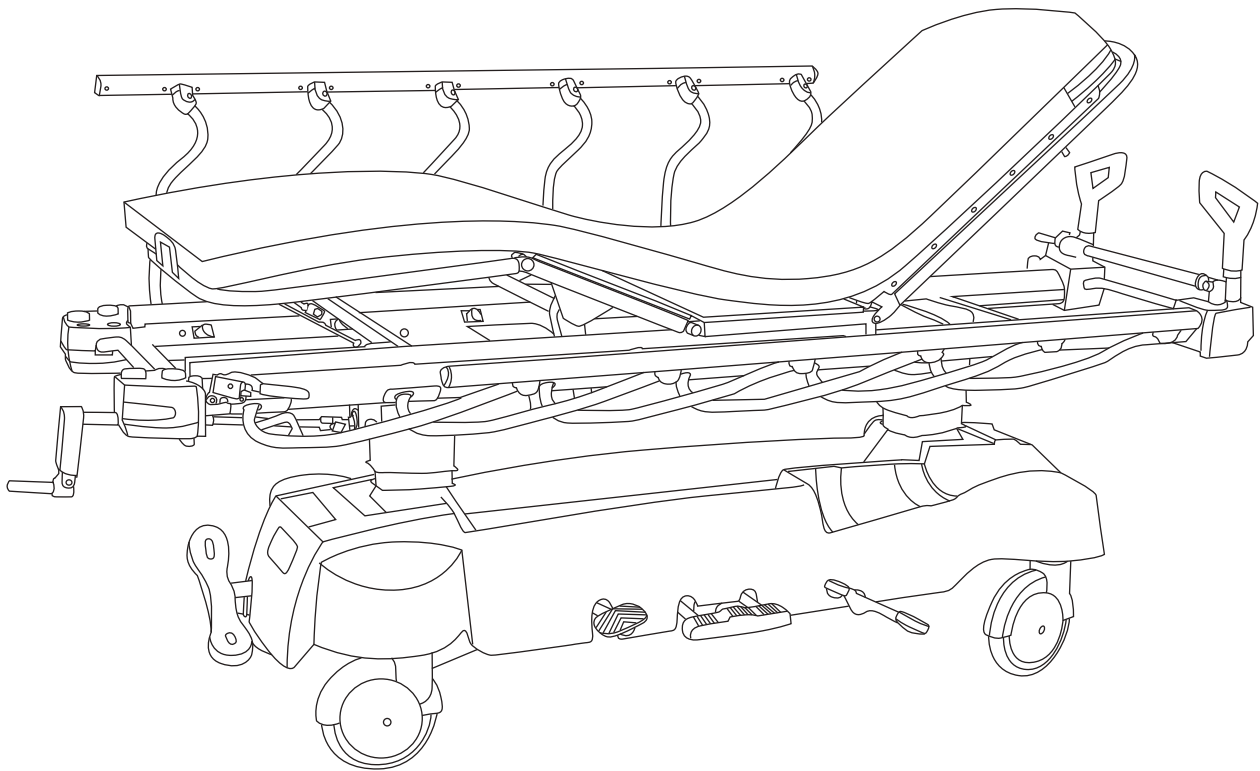


Table of contents

1.	Introduction.....	01
2.	Main purpose and Application scope.....	02
3.	Main parts.....	02
4.	Precautions.....	03
5.	Specifications.....	06
6.	Conditions for operation, storage and transportation.....	06
7.	Movements.....	07
8.1	Castor.....	08
8.2	Side rails	08
8.3	Oxygen tank holder.....	08
9.	IV pole.....	09
10.	Sliding of X-ray cassette tray.....	09
11.	Patient Scale System.....	10
12.	Set of patients' basic information.....	11
13.	Maintenance.....	12
14.	Storage.....	13
15.	Faults analysis and solution.....	14

1. INTRODUCTION

— Dear Customers

Thanks for choosing our Patient Transfer Stretcher YA-PS07. We will provide thoughtful after-sales service in the whole process of using your products. Meanwhile, we hope to get your valuable opinions to innovate the technology in the industry and better serve the treatment and nursing of patients.

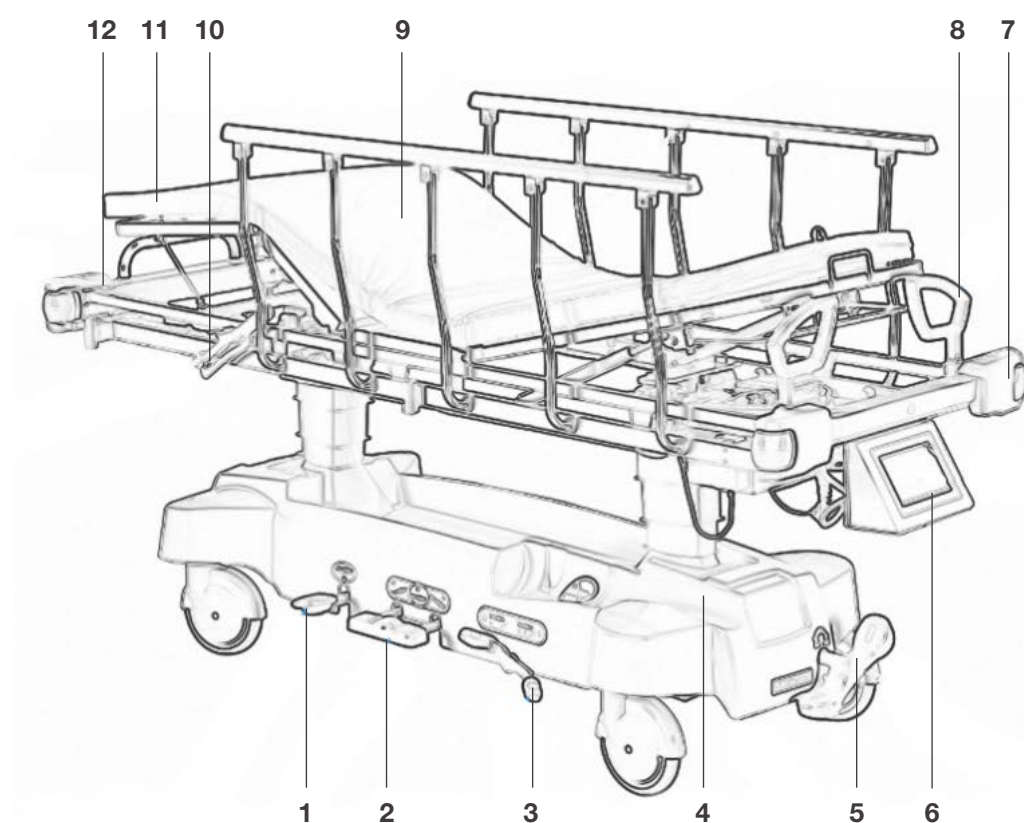
Zhangjiagang medi medical equipment co.,ltd. will do its best to avoid printing the text or image errors, but not responsible for the possible negligence. The criterion for the goods are based on the standard of the material.

2. Main purpose and Application scope

Application scope:

This product is suitable for various departments of the hospital, especially for the rescue and treatment of critically ill patients.

3. Main parts



NO.	Description
1	Foot pedal for height elevation
2	Foot pedal for lowering of height and trendelenburg(reverse-trendelenburg)
3	5th Direction wheel
4	Oxygen tank holder
5	Central braking castors
6	Patient weighing system(Optional)

NO.	Description
7	Bumper castors
8	Pushing handles
9	Handle to slide the X-ray cassette holding tray
10	Mattress
11	Handle for movement of leg section
12	Locker of side rails

4. Precautions



Warnings

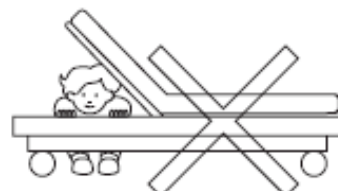
- Please be careful not to get caught by the gap of the guardrail



- Make sure the patient's head, arms and legs do not stick out of the bedside rails



- Make sure use guardrails when moving the stretcher to transfer patients



- Do not hide under the bed or place the patient's head or limbs under the bed
- Be sure to lock the casters except moving the stretcher
- Please use it correctly according to the patient's condition
- Please be careful not to pinch the guide tube
- Please do not sit on the ends of the stretcher and do not sit on the legs when the legs are raised
- When the guardrail is erected, please confirm whether the mobile lock is properly locked

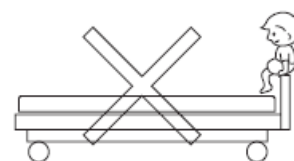


Attention

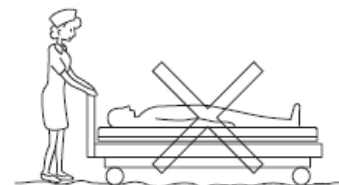
- Please do not place the ends of the heating device near the bed. Otherwise, the bed will be damaged or deformed, or even ignited, causing a fire.



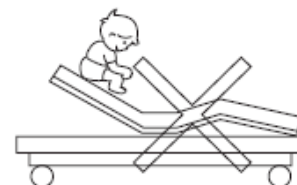
- Please do not sit on the guardrail, otherwise, it may cause damage, deformation or fall injury.



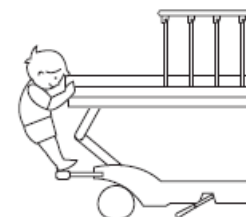
- Please do not move on uneven ground, otherwise, it may cause malfunction. If you must move on uneven ground, proceed slowly and cautiously.



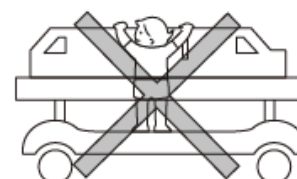
- Please do not climb on the raised part of the bed. Otherwise, the bed board may be damaged or deformed.



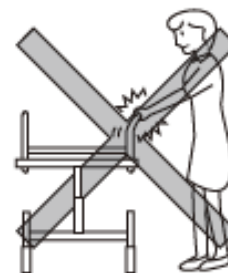
- Please do not climb the control pedal of the caster at will, otherwise, the control pedal will be damaged or deformed, and it will also cause the climber to fall and be injured.



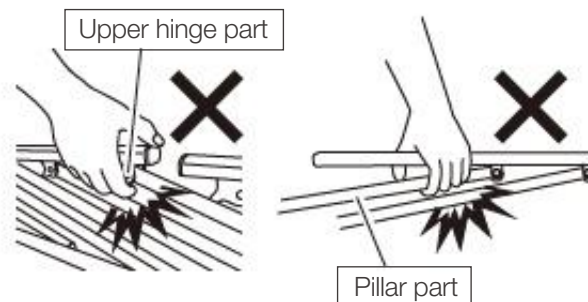
- Please do not climb the bottom cover of the bed at will.



- It is strictly forbidden to directly spray corrosive chemical sprays such as pesticides on the surface of the hospital bed.



- When using the bed with the guardrail folded, be careful not to get your hands or fingers caught between the guardrail tubes.



Prohibir

- It is prohibited to connect and install other products directly on the bed.
- It is forbidden to tie heavy objects to the bedside guardrail or tie the guardrail.
- It is forbidden for non-professional technicians to disassemble and repair without permission.
- Please use the bed in the correct direction.
- Do not perform back raises while lying on your stomach.
- Jumping on the bed is prohibited.
- It is forbidden to place infants on this bed for treatment.
- Simultaneous use by two or more patients is prohibited.
- Do not attach patient restraint straps to the rotating guardrail.
- Please do not ride or lean on the rotating guardrail.
- The rotating guardrail cannot be supported when the occupant gets up.
- When the rotating guardrail is fixed horizontally, please do not place heavy objects over 10kg.
- Please do not move the bed when the rotating guardrail is level.
- When transferring a patient, do not hold the rotating guardrail horizontally.

5. Specifications

Item	Patient transfer stretcher
Model	YA-PS07
Length	2130MM
Width	930MM
HI-LO	530-870MM
Backrest adjustment	0°~80°
Trendelenburg/Reverse Trendelenburg	-15°~15°
Castor	200mm
Mattress	Foam mattress with PU cover

6. Installation

In order to avoid failures during use, please do not place and use the bed in the venues described below direct sunlight near the heat source

- Places that are too humid or where volatile oily liquids are stored
- High temperature, high humidity, low temperature, and places that are too dry
- Keep away from dust, fumes, and environments containing salt, sulfide gas, or other corrosive gases
- Poorly ventilated place
- Places subject to turbulence, vibration and shaking
- Places with uneven ground

In the process of tilting and lifting the head and tail of the patient transfer car, it is necessary to ensure that the distance between the head or tail of the transfer car and the wall is greater than 15cm

7. Movements

1. Backrest adjustment

Adjust the backrest via the lever below the back section

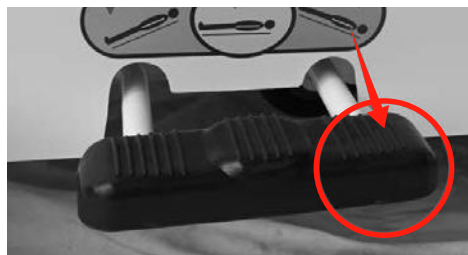
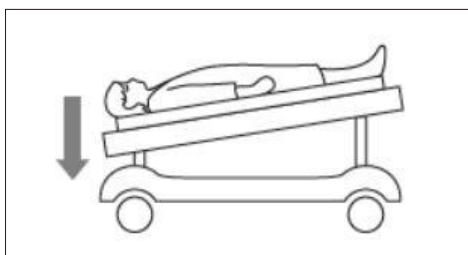


2. HI-LO adjustment: 530-870mm: Step down the foot pedal and do not stop in order to lower the stretcher (blue circle), step down the foot pedal to elevate the stretcher (red circle)

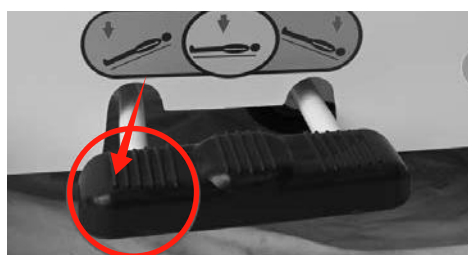
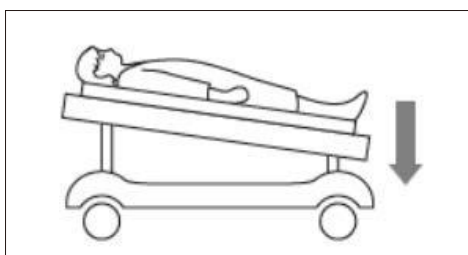
3. Trendelenburg / Reverse trendelenburg: Step down the foot pedal in the red circle



Trendelenburg: 0°-15°



Reverse trendelenburg : 0°-15°



8.1 Castor



5th direction wheel: Step down the red pedal to release the 5th wheel on the ground for direction, Step down the green pedal to lift up the 5th wheel for swiveling.

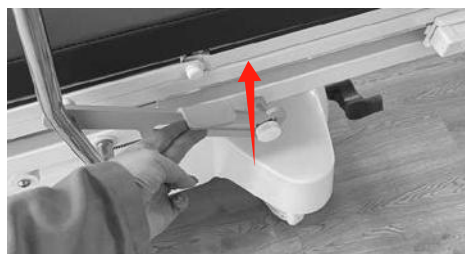
8.2 Side rail

The function of the guardrail is to prevent the patient from falling and to be used as a bridge for the bed when transferring the patient.

■ Fold up the side rails



■ Fold down the side rails



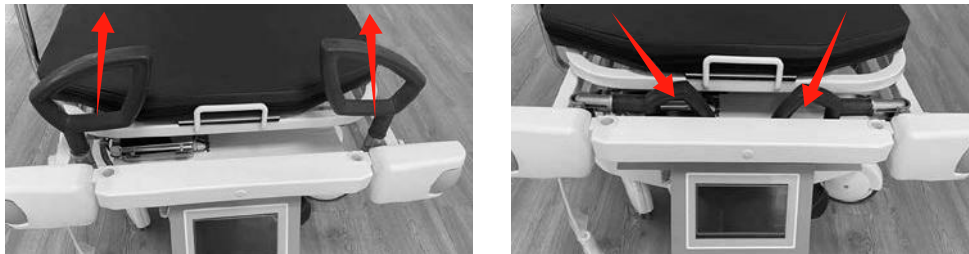
1. Release the locker of side rails
2. Fold down the side rails

8.3 Oxygen tank holder

- The oxygen cylinder tray can hold a 4L diameter oxygen cylinder
- Place the oxygen cylinders evenly in the tray
- The oxygen cylinder tray is specially designed for placing oxygen cylinders, please do not place other items arbitrarily
- When using an oxygen cylinder of more than 4L, please use an oxygen cylinder holder

8.4 Pushing handles

Fold up the handles to move the stretcher, while fold down the handles to approach the patient



9. IV pole

Each hook with loading capacity of 1kg, and the total loading capacity of IV pole to be 3kgs



10. Sliding of X-ray cassette tray

Slide the X-ray cassette tray below the patient lying surface via one lateral handle (crank)



11. Patient Scale System



Power On/Off (Red button)



Signal of patient scale system



Audible Exit Alarm



Manual



Patient name card

Audible Exit Alarm

Press the button when the patient is in bed, if the patient leaves the bed, the alarm will sound, while the patient returns to the bed, the alarm will stop the sounding, or the medical staff can prefer to press the button to stop the alarm sounding.

12. Set of patients' basic information



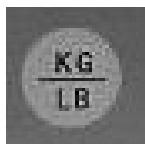
Patients' data records



"Zero" Calibration



Delete of patients' data



Exchange between "KG" and "LB"



Return to the main page

13. Maintenance

Regular safety inspections, tightening loose bolts, and adding lubricating oil to the parts that need lubrication can effectively

Extend bed life

- Keep beds and mattresses dry at all times, as water or humid air can corrode metal parts, which can cause
- The harsh noise may cause bacteria to breed and multiply. If water adheres, wipe it off immediately.
- Please soak a clean towel in the diluted detergent solution, wring it dry, wipe the bed surface, and then place the clean wool.
- The mattress cover is detachable, and the film surface is waterproof, which is easy to use and clean. It can be washed by hand or by machine.
- When washing, use a little neutral detergent. When washing by hand, please rub gently, do not scrub hard, rinse with water and dry.
- Please wash with warm water below 30°C, do not use bleach.
- Do not use the dryer. Dry in a ventilated and cool place after washing, do not expose to the sun, and do not fully dry it.
- Mildew occurs during use or storage.

Mattress covers are not ironable

- During normal use, the mattress needs to be aired regularly (1-2 times/month) because of moisture or sweat.
- It is strictly forbidden to use volatile cleaning agents to clean the bed, such as thinners, phenyl cleaners and gasoline, etc.
- The chemical solution will peel or discolor the resin coating on the metal surface, and it will also cause the plastic product to discolor or dissolve.

Never use ozone cleaners or autoclaves to clean beds and mattresses.

14. Storage

When not in use for a long time, please strictly observe the following regulations for maintenance and storage.

1. Please adjust the back board and knee board to the horizontal position, and adjust the height of the bed to the lowest position.
2. Please do not place anything other than a mattress on the bed.
3. Please do not place anything on the mattress.
4. Please do not place the bed in a place with high temperature, humidity and dust.
5. Please do not place the bed upright or tilted.

15. Faults analysis and solution

Description(Descripción)	Analysis(Análisis)	Elimination measure(Eliminación)
Brake fail (Falta de freno)	Pin and axis drop off	Reinstall Pin and axis and lock them
	Brake system of castors is abraded	Tear down and adjust the clearance of briquet
	Castors are broken	Change the castors
Fail to lift (Falta de levantamiento)	hydraulic pump broken (Instalación de control de presión hidráulica desplazados)	Change the pump (Ajustar y corregir)
	The pedal in wrong position (conk cilindro de fluido está fuera)	Repair or adjust the pedal (Repare o desplazar a una nueva)
Fail to lock the back board (Falta de bloqueo de respaldo)	The adjustable bolt of gas spring loosen (Perno ajustable de resorte de gas está abierta)	Readjust and lock (Ajustar y bloquear)
	There is something inside the controller (Hay algo en el controlador)	Clear away the thing (Despeja la cosa)
	Gas spring damaged (Resorte de gas dañada)	Displace it (Sustituirla)
	Thruster link of gas spring loosen (Hélice bieleta del clavija del eje)	Fix the pin of thruster link and lock (Fijar el clavija del eje y bloqueo)
Imaging is not clear (Imagen no es clara)	X-ray casete holding tray damaged (Hélice dañado)	Repair or replace it (Reparará o reemplazará)
The locker of the side rails is out of use	The lock system is integrated wrongly	Repair or change
	There is something obstacle about the side rails and the bed surface	Eliminate the incumbrance

X-ray storage device (outside) cannot be pulled out.

Check if the fixing blocks on both sides are all open?

Open the fixing blocks on both sides to the open state.

X-ray storage device (inside) cannot be moved.

Check whether the fixing knobs on both sides are all loosened?

Open the fixing knobs on both sides and loosen them all.

Unable to adjust the various parts of the bed to the correct position.

Are there any obstacles in the action part?

Remove obstacles.

The bed cannot be moved.

Are the casters locked?

Release the caster lock.

Although pushing the rescue cot on smooth and unobstructed ground, it feels very difficult to make steering movements in corner positions.

Is the center wheel stuck by a foreign object and cannot run?

Check center wheel activity.

CONTACT US



Youtube



Web

Pls scan the QR code for more info

-  + (86) 139 6223 1292
-  info@medik-medical.com
info@mediksurgical.com
-  www.medik-medical.com
www.mediksurgical.com